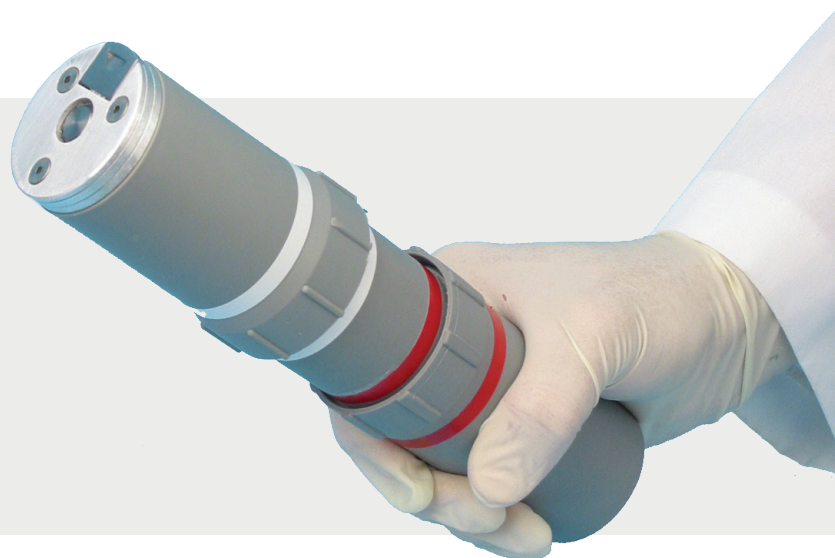


Double-Ended PET Pig

For use with PET shipping system



Features

- Conserves space, minimizes weight
- Meets DOT Yellow II requirements
- No exposed lead
- Extremely durable
- Compatible with automatic washing equipment

Description

The Double-Ended PET Pig is an all-in-one solution for the safe transport and administration of 511 keV radionuclides, such as FDG F-18. The pig is constructed in three sections of .6" (1.5 cm) lead enclosed in durable Lexan. Depending on the stage of the injection process, only one section of the pig is removed. The injection itself is accomplished without removing the syringe from the pig. Simply open the administration port and push the tungsten plunger against the syringe plunger. During injection the pig is positioned on a stand. The Double-Ended Pig accommodates a 5 cc syringe and fits into its own compact shipping container. The system employs a unique design that decreases the weight and size of the container.

Here's how it works:



Remove the Double-Ended Pig from the compact shipping container. Place behind an L-Block Shield.



Unscrew the top.



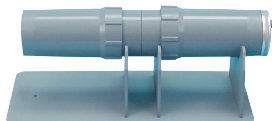
Remove the syringe and place into a dose calibrator.



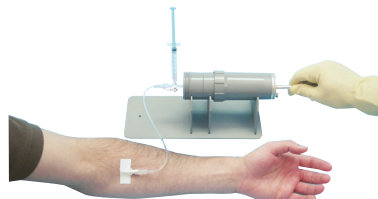
Return the syringe to the pig and put the top back on.



Transport the pig to the patient injection area.



Place the pig into the Pig Cradle so the top section of the pig is over the long section of the cradle.



Remove the bottom of the pig and connect to your preferred injection device, butterfly, etc. Open the plunger lock located on the top section by pulling the slide toward the edge of the pig. With a pen-like device, push the tungsten plunger to administer the dose. Recap the syringe. Put the bottom back on the pig.



Return the pig to the compact shipping container.

Capintec | Double Ended PET Pig

Specifications

001-793 Double-Ended PET Pig

- **Dimensions:**
9.5 x 2.3 in. (H x Dia) at maximum point (24 x 5.8 cm)
- **Shielding:**
Sides: .6 in. thick (1.5 cm) lead
Bottom: 1.44 in. thick (3.7 cm) lead
Top: .875 in. thick (2.2 cm) tungsten
- **Weight:** 9 lb (4 kg)

001-794 PET Shipping System, Double-Ended Pig

- **Dimensions:**
Container: 11.75 x 11.75 x 12.5 in. (L x W x H)
(29.8 x 29.8 x 31.8 cm)
Cubic Feet: ~1 cu ft (0.3 cu meters)
- **Weight:** 9 lb (4 kg)

Ordering Information

Shipping System, PET, Double-Ended Pig, Single:

001-794 Includes one 001-793 Double-Ended PET Pig and Shipping Container with lead.

Pig, Double-Ended, PET, .6" lead:

001-793 Accommodates 5 cc syringes with or without needle.

Related:

001-797 Pig Cradle (Accommodates 001-793)
001-771 Sheets, Absorbent, 100/pkg
001-721 Document Protector, 100/pkg



capintec.com

Mirion Technologies (Capintec), Inc. • 7 Vreeland Road, Florham Park, NJ 07932 USA

Copyright © 2023 Mirion Technologies, Inc. or its affiliates. All rights reserved. Mirion, the Mirion logo, and other trade names of Mirion products listed herein are registered trademarks or trademarks of Mirion Technologies, Inc. or its affiliates in the United States and other countries. Third party trademarks mentioned are the property of their respective owners.

SPC-191-B_EN-CAP – 08/2023