



Enhanced Telemetry Module (eTx)

For the DMC 3000 Dosimeter

The eTx is the last state-of-the-art telemetry module for DMC 3000. This enhanced module is able to transmit worker's data (worker information, gamma radiological data and setpoints) to WRM3 Telemetry System components. eTx module is also backward compatible with WRM2 Telemetry System.



FEATURES

- Transmits radiological information, in pre-configured intervals to WRM3 or WRM2 Telemetry receivers
- Low-power optimized for long battery life
 - >50 h* for 900 MHz module and
 - >100 h* for 2,4 GHz module
- 900 MHz and 2.4 GHz Options
- Module power supply: AAA battery or micro USB connector
- Designed for ruggedness and durability
- Waterproof IP67 (1 m 1 hour)

*With Duracell industrial battery

DESCRIPTION

The add-on eTx Module attaches to the DMC3000 dosimeter is providing a connectivity feature to transmit measurements and wearer information to WRM2 and WRM3 telemetry systems.

The module provides also a supplemental visual alarm indication (LED).

RELATED PRODUCTS

- Telemetry Systems: WRM3 and WRM2
- Readers: LDM 3200, LDM 320D/W, LDM 1000
- Software: LDMAccess, DMCUser, Teleview 3000 and TelemetryStudio



ENHANCED TELEMETRY MODULE | FOR THE DMC 3000 DOSIMETER

PHYSICAL CHARACTERISTICS

- **Transmit power output and sensitivity:**
 - 125 mW (900MHz), 10 mW - 63 mW (2.4 GHz) locally regulated
 - Sensitivity: -106 dBm (900 MHz), -100 dBm (2.4 GHz)
- **Frequencies:** 900 (902-928) MHz or 2.4 ISM frequency range
- **Transmission interval:** user configurable

ELECTRICAL CHARACTERISTICS

- **Internal Power:** AAA Alkaline Battery (LR03)
- **External Power:** battery adaptor 1.5 V - 3.6 VDC, external power 100 - 220 VAC with USA and Euro adapter or through micro USB connector

MECHANICAL CHARACTERISTICS

- Rugged, high impact polycarbonate-ABS case
- Dimensions with DMC 3000:
 - 141 x 60 x 21 mm (5.6 x 2.4 x 0.8 in) max. without clip
 - 141 x 60 x 28mm (5.6 x 2.4 x 1.1 in) with standard clip
- Weight with DMC 3000 and battery: 163 g (5,74 oz)
- Weight eTx module only: 81 g (2.86 oz)
- Worn by a replaceable clip

ENVIRONMENTAL CHARACTERISTICS

- **Temperature range:** -10°C to 50°C (14°F to 122°F)
- **Storage:** -20°C to 71°C (-4°F to 160°F)
- **Shock, vibration and drop resistant**
- **IP67 protection:** 1 m (39 in) during 1 hour
- **EMC:** complies and exceeds standards by a large margin (C € compliant certificate number: DOC013768)
 - MIL STD 461-RS103 (pulsed electric field): exceeds 200 V/m from 80 MHz to 5 GHz
 - MIL STD 461-RS101 (magnetic field 30 Hz to 100 kHz)
- **Agency Approvals:** FCC (900 MHz) (USA), IC (Canada), and CE (Europe) (2.4 GHz)

PRODUCT CHARACTERISTICS

Alarm Features and communication

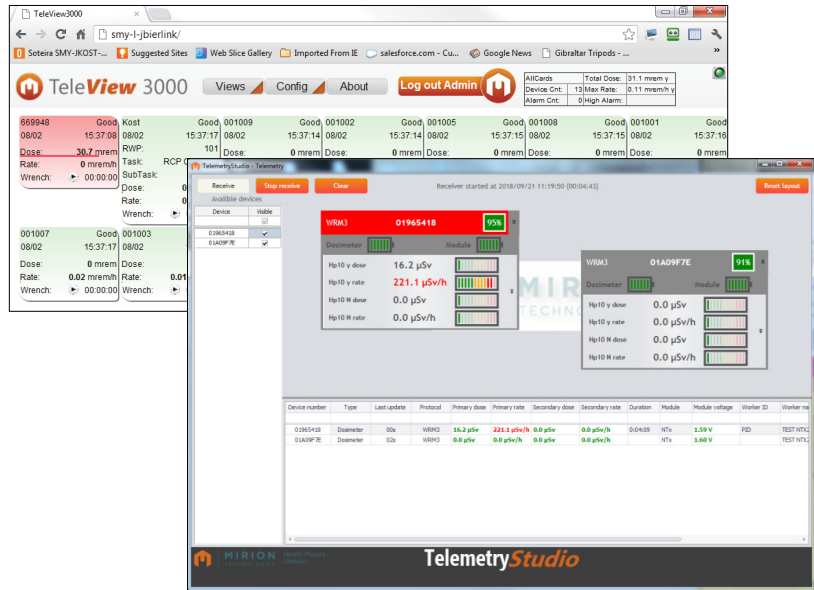
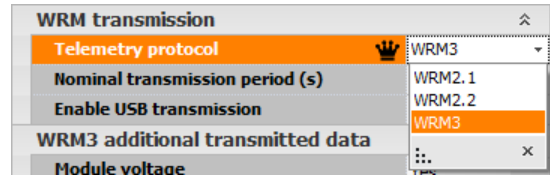
- DMC 3000 alarming speaker, vibrator, high efficiency red flash LED, 3 top LEDs and display indicators
- The DMC 3000 alarms are reported to the eTx module. The LEDs of the eTx module blink red between each transmission to the supervisor. Note that the buzzer has the same pattern



Red flashes of the left and right LED: eTx Module in alarm

Compatibility

- Compatible with DMC 3000 firmware V7.8.x or higher
- Compatible with WRM2 or WRM3 system (AWM and more)



Example of a telemetry system