



## STAINLESS STEEL

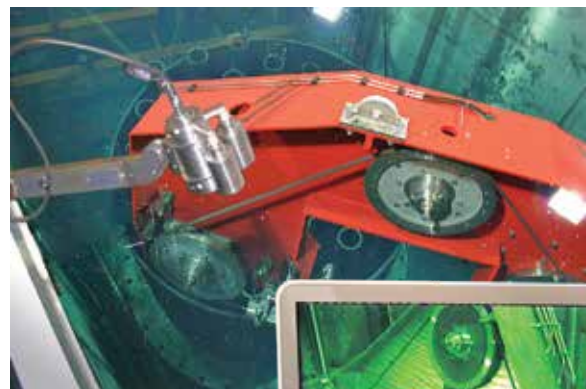
# Radiation Tolerant Cameras

*A range of options to suit your nuclear application*

CCTV monitoring is of vital importance in nuclear facilities. Surveillance systems used within nuclear applications, whether permanently located within the plant or used in portable or temporary configuration, are required to meet rigorous specifications to withstand high levels of radiation and resist its harmful effects. Mirion's radiation tolerant cameras are encased in stainless steel and designed to survive the hostile environments frequently encountered in nuclear environments – both in-air or underwater (i.e. fuel ponds).




Our specialist team of System Design Engineers and Project Managers have significant experience in CCTV projects from initial concept to final on-site commissioning. We have the ability to re-package our imaging systems to fit through legacy penetrations and cell/tank access paths not previously used for cameras, while leveraging the latest IP (Internet Protocol) technologies for data storage and remote/wireless viewing.

Our comprehensive range of cameras are supported with a selection of lens options and lighting attachments, allowing operators to carry out a variety of inspection tasks for both low and high radiation environments with a total gamma dose between 100 Gy – 2M Gy. Additionally, we can provide customised CCTV systems which comprise not only of cameras, but also IP and analogue control solutions, depending on your operational requirements.







<p><b>DOTCAM</b> </p>  	<p><b>MINIPTZ MK2</b> </p>  	<p><b>C981</b> </p>  	
<p><b>ALLRAD MK2</b> </p>  	<p><b>HD-RAD</b> </p>    		<p><b>DOTCAM - HR</b> </p>  
<p><b>SC985</b> </p>  	<p><b>SC985 HR</b> </p>  	<p><b>RC915</b> </p>  	
<p><b>ALLRAD</b> </p>  	<p><b>R981 COMPACT</b> </p>  	<p><b>HYPERION</b> </p>  	
<p><b>R93</b> </p>  	<p><b>R941</b> </p>  	<p><b>R942</b> </p>  	